

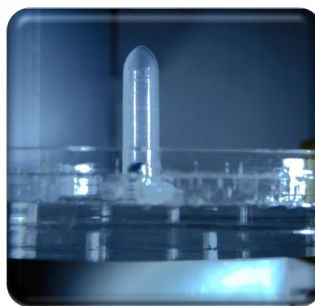


# SERACAM<sup>®</sup>

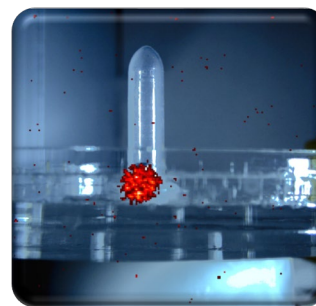
## Real time Gamma Optical Video Imaging at the point of use



Optical image  
of an americium-241  
source (12.5 MBq)



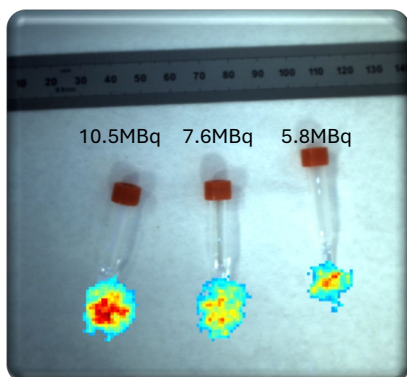
Gamma-Optical image  
of an americium-241  
source (12.5 MBq)



**Shows the distribution and exact location of gamma sources**

**Real time optical and gamma video overlay**

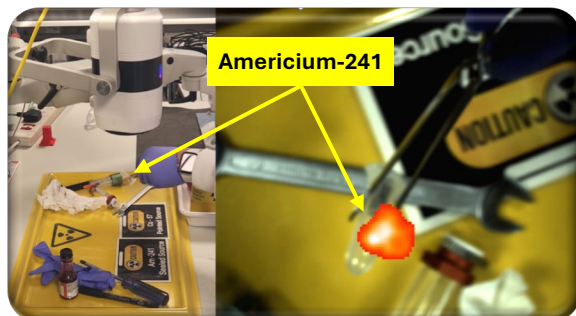
**Immediate visualisation of gamma sources at the point of use**



High resolution gamma-optical  
imaging of multiple technetium-  
99m sources (141 keV) in close  
proximity



Precise localisation of a 5mm  
diameter americium-241 source  
(12.5 MBq, 60 keV)  
in a lead pot (lid removed)



In the left frame, Seracam is positioned above the working area during a clean up operation for hands-free operation.

In the right frame a simultaneous screen shot of the operator's view through the Seracam display screen is shown.

An americium-241 source was rapidly identified and safely removed to a lead container.

A Seracam survey of the working area after clean up showed no other gamma sources were present.

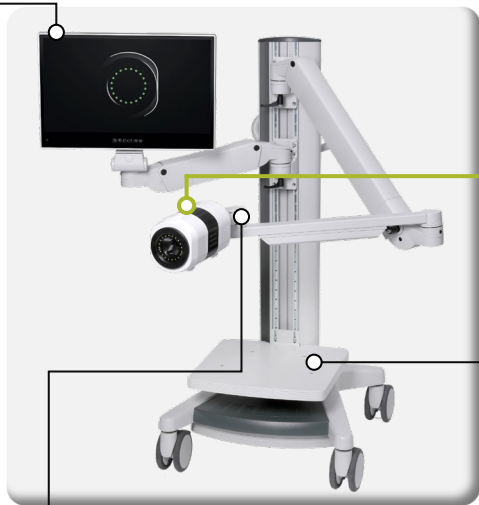
# SERACAM

## Real time Gamma Optical Video Imaging at the point of use

A touchscreen interface provides fast and intuitive camera control and real time image display for immediate operator feedback. The dedicated Seracam application saves still and video images for archiving and is designed for cybersecurity.

**The core of the Seracam system is the fully self-contained, self-shielded, 6" diameter camera head.**

**Contains gamma and optical signal detection and amplification technology, all electronics and firmware.**



Seracam can be provided on a wheelbase for easy movement around the operations area.

A highly articulated arm with a reach of up to 1.3m and a counter-balanced, gimbal mount allows easy positioning for the optimum field of view, sensitivity and resolution for the case at hand.

Alternative configurations are available according to specific situation requirements e.g. wall mounted, desktop mounted.

With a single power-over-ethernet connection, the camera head can be rapidly detached and carried in one hand, optionally in a carry case.

Plug-and-play operation means the system can be rapidly installed and is ready-to-use within 1 minute of power on.



*High spatial resolution*

*Still or video images*

*Touch screen control*

*Hands-free operation*

*Plug-and-play set up*

*Gamma isotopes 20-364 keV*

*60° field of view*

*Operating temperature up to 35°C*

*110-240 V power supply*

*Low power consumption (<10 Watts)*

### **For more information:**

At Serac Imaging Systems Ltd we are keen to talk to you about Seracam and explore how real time gamma-optical video imaging might help your nuclear operations.

If you would like to speak with one of our dedicated team, please drop us an email or call us on the number below.

Email: [service@seraclifesciences.com](mailto:service@seraclifesciences.com)

Phone: **+44 (0) 208 948 0000**



[www.seracimaging.com/industrial/](http://www.seracimaging.com/industrial/)